

Baixos

Sinfonia n^o I
en Sol menor

per

Violins per 1^a i 2^a - Viola - Cel·la - Baixos

per

Juli Garreta i Arboira



Alto molto depressa

mf

pp

p

a tempo

pizz

arch.

a tempo

a tempo

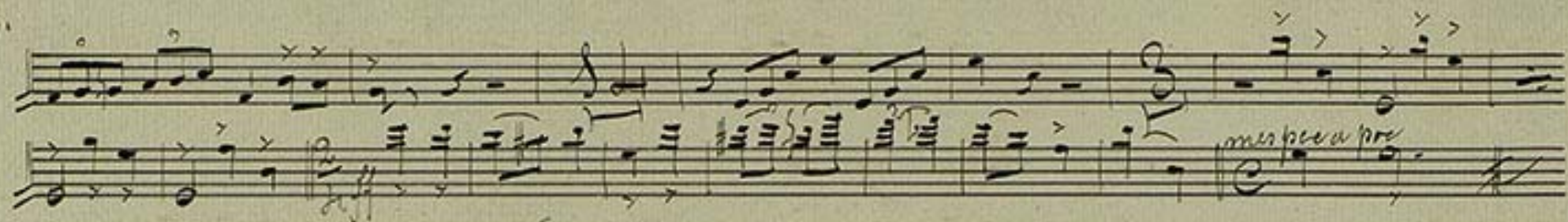


Handwritten musical score consisting of approximately 12 staves. The notation includes various rhythmic values, accidentals, and dynamic markings. Key markings include:

- mp* (mezzo-piano) appearing on the second and fourth staves.
- Ad tant depressa* (Ad libitum, then gradually slower) on the fifth staff.
- a tempo* (return to the original tempo) on the sixth staff.
- meno depressa* (less slow) on the seventh staff.
- per tempo* (per tempo) on the eighth staff.

The score features complex rhythmic patterns, including triplets and sixteenth notes, and includes repeat signs and first/second endings. The manuscript is written in dark ink on aged paper.





Segon el temps

Handwritten musical score for the second system, featuring multiple staves with notes, rests, and dynamic markings like "No molt pre a pre", "mes magut", "Molt pre a pre", and "Pre mes depressa".

Handwritten musical score for the second system, featuring multiple staves with notes, rests, and dynamic markings like "No molt pre a pre", "mes magut", "Molt pre a pre", and "Pre mes depressa".



Poc més depressa

ritenuto

Handwritten musical score for the first section, "Poc més depressa". It consists of five staves. The first staff is a treble clef with a melodic line. The second staff is a treble clef with a similar melodic line. The third staff is a treble clef with a melodic line. The fourth staff is a bass clef with a bass line. The fifth staff is a bass clef with a bass line. The music is written in a common time signature. There are various annotations including "pp" (pianissimo) and "ritenuto".

Berceu Tempo

Handwritten musical score for the second section, "Berceu Tempo". It consists of seven staves. The first staff is a treble clef with a melodic line. The second staff is a treble clef with a melodic line. The third staff is a treble clef with a melodic line. The fourth staff is a treble clef with a melodic line. The fifth staff is a bass clef with a bass line. The sixth staff is a bass clef with a bass line. The seventh staff is a bass clef with a bass line. The music is written in a common time signature. There are various annotations including "Moderato", "pp", "arch", and circled numbers "30" and "31".



Handwritten musical score on ten staves. The notation includes various rhythmic values, accidentals, and dynamic markings such as *pizz*, *arco*, *mp*, and *p*. The score is written in a cursive, historical style.



Final

Depressa y Apassionat

The image shows a page of handwritten musical notation for a piece titled "Final". The score is written on ten staves. The first staff begins with the tempo and mood markings "Depressa y Apassionat". The notation includes various rhythmic values, accidentals, and dynamic markings such as "mf", "p", and "pp". There are also performance instructions like "arch" and "a pesat a tempo". The score concludes with a double bar line and a large "B" symbol. A red circular stamp is visible in the bottom right corner of the page.

Handwritten musical score on ten staves. The notation includes various note values, rests, and dynamic markings such as *p*, *mp*, *pp*, *pizz*, and *arch*. The score concludes with a double bar line and a large number '6' written below the final staff.

Molt pesat

pizz

