

Giberola

"Giberola"

Flabiol

A handwritten musical score for the instrument 'Flabiol'. The score is written on ten staves. The first staff begins with a treble clef, a key signature of two flats (B-flat and E-flat), and a 3/8 time signature. The music is characterized by intricate rhythmic patterns, including many sixteenth and thirty-second notes, and frequent rests. Dynamic markings such as *pp*, *ff*, *mf*, and *mfz* are used throughout. There are also markings for *tr* (trill) and *trp* (trill-piccato). The score includes various time signature changes, such as 6/8, 2/4, 3/4, and 6/4. A double bar line with repeat dots appears in the second staff. The final staff contains a complex rhythmic notation with a 3/4 time signature, a 2/4 time signature, and a 7/4 time signature, followed by a large fraction $\frac{35}{105}$. The manuscript shows signs of age, with some staining and fading.

"Giberola"

Table 1st

A handwritten musical score for a piece titled "Giberola". The score is written on ten staves of music. The notation includes various rhythmic values, accidentals, and dynamic markings such as *mp*, *mf*, *pp*, and *ff*. The piece features several key changes and time signature changes, including 6/8, 3/4, 2/4, and 3/8. There are also some unusual markings, such as a wavy line in the fifth staff and a shaded area in the eighth staff. The score concludes with a double bar line and the number 35/105 written below it.

Giberola

Libre 2^{on}

Handwritten musical score for "Giberola" in 2/8 time. The score consists of eight staves of music. The key signature is one flat (B-flat). The piece includes various dynamics such as *ff*, *mf*, *pp*, and *creix.* (crescendo). There are also markings for *rit.* (ritardando) and *tr.* (trill). The score features complex rhythmic patterns, including triplets and sixteenth notes. The piece concludes with a double bar line and the number 35/105 written below the staff.

"Giberola"

Zenora 12

A handwritten musical score for a piece titled "Giberola". The score is written on ten staves of music. The notation includes various rhythmic values, accidentals, and dynamic markings such as *pp*, *f*, *mp*, and *mf*. The piece features several key changes and time signature changes, including 6/8, 2/4, and 3/4. The score concludes with a double bar line, a repeat sign, and the number 35 over 105. The handwriting is in dark ink on aged paper.

"Giberola"

Tenora 2.^a

Handwritten musical score for Tenora 2.^a. The score is written on ten staves. The first staff is in treble clef with a 6/8 time signature. The second staff is in alto clef with a 2/4 time signature. The third staff is in bass clef with a 2/4 time signature. The fourth staff is in bass clef with a 3/4 time signature. The fifth staff is in bass clef with a 2/4 time signature. The sixth staff is in bass clef with a 2/4 time signature. The seventh staff is in bass clef with a 2/4 time signature. The eighth staff is in bass clef with a 2/4 time signature. The ninth staff is in bass clef with a 2/4 time signature. The tenth staff is in bass clef with a 2/4 time signature. The score includes various musical notations such as notes, rests, accidentals, and dynamic markings (ff, mp, f). There are also some numerical markings like '2', '3', '5', '6', '7', '8', '9', '10', '11', '12', '13', '14', '15', '16', '17', '18', '19', '20', '21', '22', '23', '24', '25', '26', '27', '28', '29', '30', '31', '32', '33', '34', '35', '36', '37', '38', '39', '40', '41', '42', '43', '44', '45', '46', '47', '48', '49', '50', '51', '52', '53', '54', '55', '56', '57', '58', '59', '60', '61', '62', '63', '64', '65', '66', '67', '68', '69', '70', '71', '72', '73', '74', '75', '76', '77', '78', '79', '80', '81', '82', '83', '84', '85', '86', '87', '88', '89', '90', '91', '92', '93', '94', '95', '96', '97', '98', '99', '100'. The score ends with a double bar line and a 6/8 time signature.

"Giberola"

Trompeta 1^a

Handwritten musical score for Trompeta 1^a, titled "Giberola". The score consists of ten staves of music. The first staff begins with a treble clef, a key signature of one flat (B-flat), and a 6/8 time signature. The music is written in a single melodic line. The score includes various dynamic markings such as *ff*, *mp*, and *p*, and includes repeat signs and a double bar line with a repeat sign. The final measure of the piece is marked with a double bar line, a repeat sign, and the number 35 over 105. The handwriting is in dark ink on aged paper.

"Giberrola"

Tröbete 2^a

Handwritten musical score for the piece "Giberrola" for Tröbete 2^a. The score is written on ten staves. The first staff is in treble clef with a 6/8 time signature. The second staff is in treble clef with a 3/8 time signature. The third staff is in bass clef with a 2/4 time signature. The fourth staff is in bass clef with a 6/8 time signature. The fifth staff is in bass clef with a 3/8 time signature. The sixth staff is in bass clef with a 2/4 time signature. The seventh staff is in bass clef with a 6/8 time signature. The eighth staff is in bass clef with a 2/4 time signature. The ninth staff is in bass clef with a 2/4 time signature. The tenth staff is in bass clef with a 2/4 time signature. The score includes various musical notations such as notes, rests, accidentals, and dynamic markings (ff, mf, mp, f). There are also some performance instructions like accents and slurs. The piece concludes with a double bar line and the number 35/905.

"Giberola"

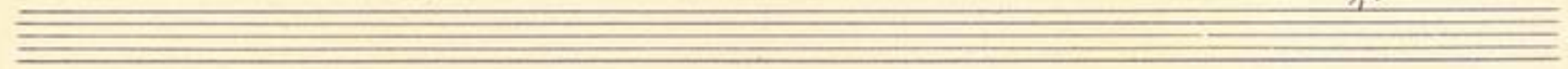
Trombo'

Handwritten musical score for Trombone, titled "Giberola". The score is written on ten staves. The key signature is two flats (B-flat and E-flat), and the time signature is 6/8. The music features various dynamics including *mp*, *f*, *ff*, and *mf*. There are several measures with repeat signs and some measures with a *cresc.* marking. The score concludes with a double bar line and a tempo marking of $\frac{35}{105}$. The notation includes eighth and sixteenth notes, rests, and various articulation marks.

"Giberola"

Fiscorn 1^{er}

This is a handwritten musical score for the first part of a piece titled "Giberola". The score is written on ten staves. The first staff is in bass clef with a key signature of two flats (B-flat and E-flat) and a 6/8 time signature. The music is characterized by complex rhythmic patterns, including triplets and various note values. Dynamic markings such as *ff* (fortissimo), *mp* (mezzo-piano), and *p* (piano) are used throughout. The score includes numerous accidentals (sharps, flats, naturals) and articulation marks. The piece concludes with a double bar line and a final cadence. At the bottom right of the page, the numbers "35" and "105" are written, possibly indicating page or measure numbers.



"Giberola"

Fiscoria 2^o

A handwritten musical score for a piece titled "Giberola". The score is written on ten staves. The first staff begins with a treble clef, a key signature of two flats (B-flat and E-flat), and a 6/8 time signature. The music is characterized by frequent changes in time signature, including 3/8, 2/4, 3/4, 6/8, and 2/2. The notation includes various rhythmic values such as eighth, sixteenth, and thirty-second notes, as well as rests and dynamic markings like *ff*, *mf*, and *mp*. There are also some markings that appear to be *mf* with a tilde symbol. The score concludes with a double bar line and a page number $\frac{35}{105}$ written below the staff.

"Giberola"

Baix

Handwritten musical score for a single staff instrument, titled "Giberola" and marked "Baix". The score is written on a single staff with a treble clef and a key signature of two flats (B-flat and E-flat). The time signature is 3/8. The piece begins with a dynamic marking of *ff* (fortissimo) and includes various performance instructions such as *arc* (arco), *Pizz.* (pizzicato), and *mf* (mezzo-forte). The notation includes a variety of note values, rests, and articulation marks. The score concludes with a double bar line and the number 35/105 written below the staff.