

Partitura

"La Rosada"  
(Sardana)

Juli Garreta.

Flauto  $\text{2/4}$

Tiples  $\text{2/4}$

Tenores  $\text{2/4}$

Cornetes  $\text{2/4}$

Tromboni  $\text{2/4}$

Fideles  $\text{2/4}$

Baix  $\text{2/4}$





Flv.

Flp.

Gen.

Com.

Fr.

Fcl.

Org.





Handwritten musical score for a brass ensemble. The score consists of seven staves, each labeled with an instrument: Flv. (Flute), Trp. (Trumpet), Ten. (Trombone), Corn. (Corn), Sax. (Saxophone), Trbn. (Trombone), and Boin. (Bass). The music is written in a common time signature (C) and features various rhythmic patterns, including eighth and sixteenth notes, rests, and dynamic markings such as *ff* (fortissimo). The notation includes stems, beams, and slurs, with some notes enclosed in parentheses. The paper shows signs of age, including yellowing and some foxing.





Handwritten musical score for a choir and instruments. The score is divided into two systems by a double bar line. The first system contains measures 3, 4, and 5. The second system contains measures 16, 17, and 18. The instruments listed on the left are Flute (Fl.), Clarinet (Cl.), Bassoon (Fag.), Horn (C.), Trumpet (T.), Trombone (Tb.), and Bassoon (Fag.). The vocal parts are labeled 'Cor.' (Chorus), 'Tsc.' (Tenor), and 'Baix' (Bass). The notation includes various musical symbols such as notes, rests, dynamics (p, pp), and articulation marks.





Flu.  
Fip.  
fen.  
Corn.  
Fr.  
Tlc.  
Orx





Handwritten musical score for a symphony orchestra, featuring staves for Flute (Fl.), Clarinet (Cl.), Bassoon (Fag.), Horn (Cm.), Trumpet (Tr.), Percussion (Perc.), and Bass (Baix). The score is written in a single system with a repeat sign. The notation includes various notes, rests, and dynamic markings such as *pp.* and *f.*. The key signature is one flat (B-flat) and the time signature is 4/4. The score is divided into two measures by a repeat sign, with the second measure containing a double bar line and a fermata over the final note.





Handwritten musical score for a symphony orchestra, featuring the following parts:

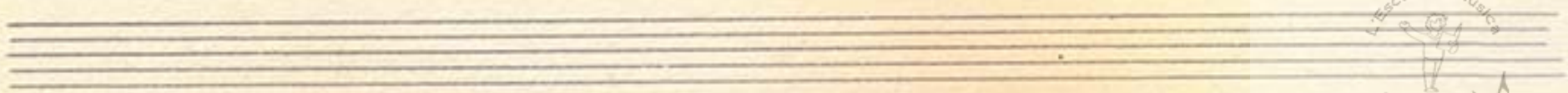
- Flü.** (Flute): Rapid sixteenth-note passages.
- Ffp.** (First Flute): Sustained notes with a *dim.* (diminuendo) marking.
- Sec.** (Second Flute): Sustained notes with a *dim.* (diminuendo) marking.
- Corn.** (Cornet): Sustained notes.
- Tr.** (Trumpet): Sustained notes with a *dim.* (diminuendo) marking.
- Fag.** (Bassoon): Rapid sixteenth-note passages.
- Bass.** (Bass): Sustained notes.

The score is written on eight staves with various musical notations including notes, rests, and dynamic markings.





A handwritten musical score on aged, yellowed paper. The score consists of eight staves. The top staff features a complex melodic line with many sixteenth and thirty-second notes, some beamed together. The second and third staves have simpler, more rhythmic lines with some long notes. The fourth staff contains a series of rests, with some notes appearing later in the piece. The fifth and sixth staves show rhythmic patterns with notes and rests. The seventh staff has a series of notes, some with stems pointing downwards. The eighth staff is a simple melodic line. The notation is in black ink and includes various musical symbols such as clefs, notes, rests, and beams.





A handwritten musical score for a brass band, consisting of seven staves. The parts are labeled on the left as follows: Flp. (Flute), Fip. (First Trumpet), Fen. (Second Trumpet), Corn. (Cornet), Tr. (Trombone), Fide. (Tuba), and Baix (Bass). The score is written in a single system with vertical bar lines. The Flute part features a complex melodic line with many sixteenth and thirty-second notes. The Trumpet and Cornet parts have more rhythmic, block-like figures. The Trombone part is a steady eighth-note accompaniment. The Tuba part consists of a few long notes. The Bass part is a simple, rhythmic line. The handwriting is in dark ink on aged, slightly yellowed paper.





Fls.

fip.

fes.

Cor.

fr.

Pic.

Viol.





Flv.

fip.

fes.

Corn.

fr.

Fisc.

Baix

10





Flo.

Fip.

Fes.

Corn.

Tr.

Fic.

Bas.

Handwritten musical score for a brass band. The score is written on seven staves, each labeled with an instrument: Flo. (Flute), Fip. (Flute in C), Fes. (Flute in E-flat), Corn. (Cornet), Tr. (Trumpet), Fic. (Flute in B-flat), and Bas. (Bass). The music is written in a historical style with various note values, rests, and dynamic markings. The score is organized into measures, with a large bracket on the right side indicating a section. There are some purple ink markings on the right side of the page, including the word 'donor' and some illegible text.

